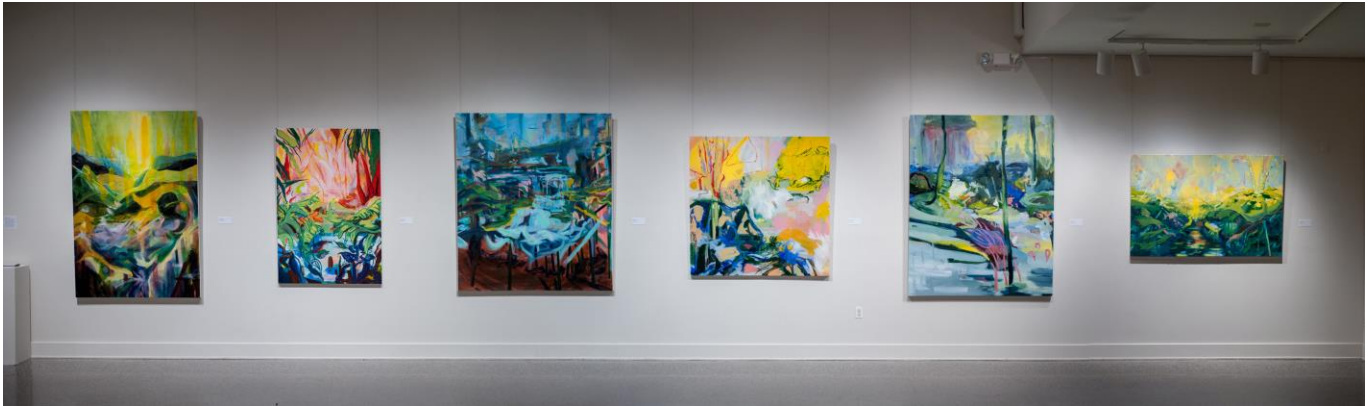


## PAINTING & DRAWING – BFA APPLICATION PROCESS



The Painting / Drawing faculty at SUNY New Paltz welcome Spring 2024 applicants to the BFA Program. Students who have completed Basic Painting and at least one of the following classes: Intermediate Painting, Thematic Drawing, Watermedia / Collage, or Figure Drawing are eligible to apply. *(If you are currently enrolled in 1 of these 300-level courses we will also consider your portfolio.)*

As a BFA, you will become part of a vital creative community. Our program has a history of students working with both traditional approaches to painting & drawing, and exploratory mixed and multi-media combinations with found materials, sculptural attachments/inclusions, installation formats, image projection, video, and even a touch of alchemy. We're interested in interesting work; we encourage our students to follow creative ideas wherever they might lead. Our studios provide privacy for thinking/working and friends nearby for insights when needed.

Your BFA application portfolio should include a selection of your best work in painting and drawing. Mixed media works are also OK. No set number is required; a good estimate is 8 – 10 paintings and 5 -10 drawings. Most of the portfolio pieces should be recent. Choose works that reveal your technical skills and creative abilities - how you get ideas for & develop your work. A variety of subject matter is fine; if your work is beginning to follow a conceptual / thematic direction, your display should indicate this. You may bring sketchbooks; mark some “best” pages to make sure we see those. If important works are not available in New Paltz, you may show us these on a laptop.

The Art Dept deadline for BFA applications is March 8. To apply, please write up to one paragraph in response to each question below. Email us your answers and jpeg photos of 2 of your best works in painting/drawing by this date. Send one copy of your answers & the 2 photos to Prof. Robin Arnold [arnoldr@newpaltz.edu](mailto:arnoldr@newpaltz.edu) and one copy to Prof. Kathy Goodell: [goodellk@newpaltz.edu](mailto:goodellk@newpaltz.edu) Also include a recent copy, photo, or screen shot of your progress report to each of us. **IMPT: Include your name in ALL attached file names.**

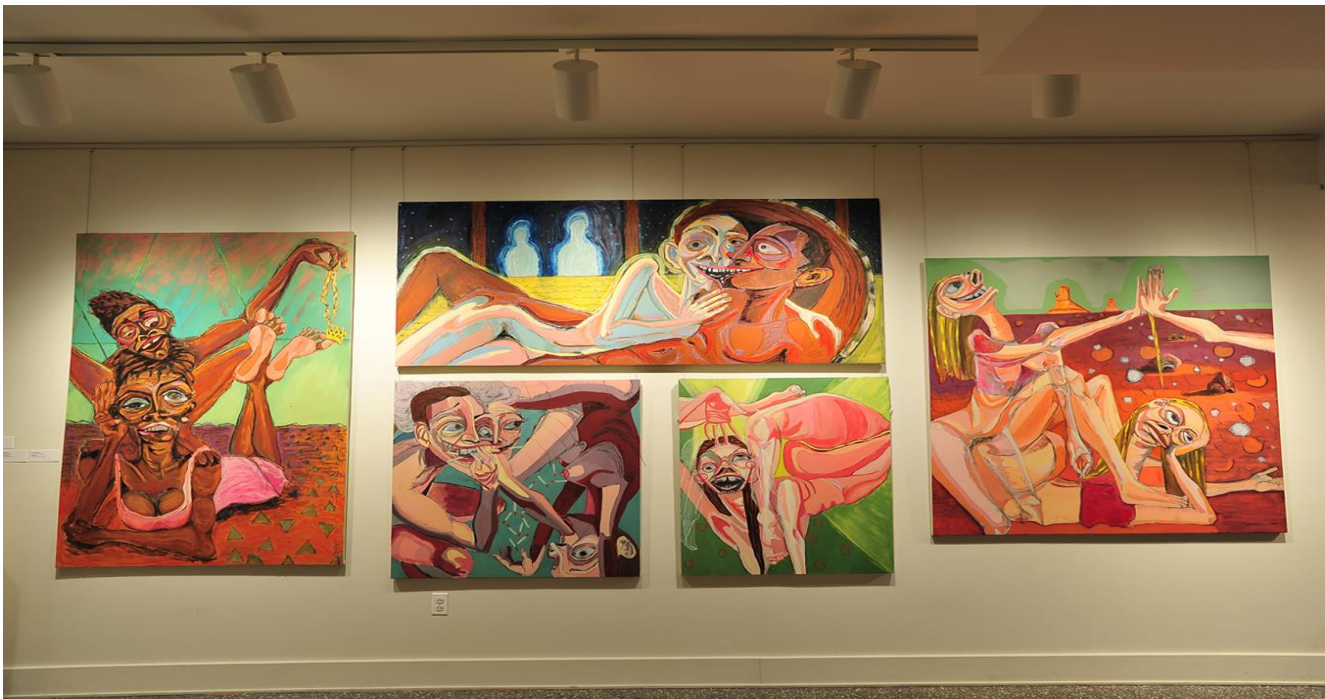
We will email you with a time & set-up instructions for an in-person portfolio review during Art Aid week (March 13 - 15), or soon after if there is not enough time to see everyone that week. The day of your review, Painting / Drawing faculty will meet with you for approximately 20 min. You will receive insights, questions, and direction on your work, + advice on classes to take in future terms to support the work's trajectory. Acceptance results are available after all reviews are completed.

## BFA APPLICANTS:

1. Discuss your artistic background. (Include a list of all painting & drawing classes you've taken here, with instructor's name. List art courses transferred in as well.)
2. What experiences led you to major in art?
3. Why are you interested in the BFA degree, and why in Painting/Drawing?
4. How much significance does drawing have for you? How do you make use of it in painting?
5. Tell us about media preferences, what you love about your favorite materials and why. For ex., do you prefer drawing to painting, paper to canvas, watercolor to oil, mixed or multi-media, found materials, etc.? Do you have ideas for three-dimensional, cross-disciplinary or time-based expansions of painting/drawing work you'd like to explore?
6. How do you get ideas for your work? Tell us about your creative process.
7. What artists have influenced your work? What issues have influenced your work recently?
8. Do you feel you have a direction in your work? How do you see it changing/developing?
9. How do you make use of reference materials?
10. As honestly as possible, assess your technical skills & creative abilities in painting, drawing.
11. Do you think your work is innovative – questioning or challenging the conventions of the medium / field / traditions of Painting/Drawing?
12. If you are assigned a studio space, you are expected to use it as productively as possible, complying with safety regulations and respecting the working requirements/space needs of others. Please discuss your work ethic & cooperative/ collaborative abilities.

**Thank you for your interest! We look forward to reviewing your work!**

## THE SENIOR STUDIO PORTFOLIO / BFA Thesis Exhibition



Students in the BFA major who are nearing the completion of their degree programs may apply for admission to Senior Studio\*. This review of your progress and advanced work is to assure your potential to successfully complete a body of work for your BFA show and graduate with this professional degree. The Senior Studio I & II classes provide 2 semesters of focused studio time to develop the work and plan the format for your BFA Thesis Exhibition in the

College's Dorsky Museum. Your project may be in painting, drawing, or mixed / multi-media. At this review, we look beyond technical mastery for evidence of a conceptual focus, a direction in your imagery that is the product of your creative voice. To apply, email us a portfolio of at least 8 –10 digital photo exs. of your most recent work, and answers to the questions below. This portfolio should demonstrate your readiness for Sr. Studio, and your growth as an artist since entering the BFA program. Please email the images and answers to Robin Arnold and Kathy Goodell at the emails shown above. Senior Studio applications are due April 5. Thank you!

#### SENIOR STUDIO APPLICANTS:

1. Do you feel more capable of independent work since entering the BFA? In what ways?
2. What feels cohesive about your work at this point, in process and content? How do you feel it is innovative?
3. Can you identify topics/directions to pursue for your thesis work in the next 2 terms? Tell us about these ideas.
4. Do you see yourself continuing as a professional artist beyond graduation? What are your plans?
5. Can you think about / assess your work in relation to the contemporary art world? In relation to contemporary culture (viewers who will see it, and others who may not, but are also citizens of our world)? Please discuss.
6. What do you gain/ have you gained from being part of a shared studio environment?
7. Are you prepared to plan, install, and de-install a thesis exhibition in a professional manner? Describe past exhibition experience.
8. What concerns (if any) do you have about completing your thesis work and show?

*\*You are eligible for Sr. Studio when you have enough credits to complete your BFA degree in two more semesters. Sr. Studio I and Sr. Studio II must be taken in separate terms-- typically, the last 2 terms of your BFA program. Images above, and at top of flyer are from student BFA thesis shows in the Dorsky Museum. Image below: a student's BFA studio space in SAB.*

